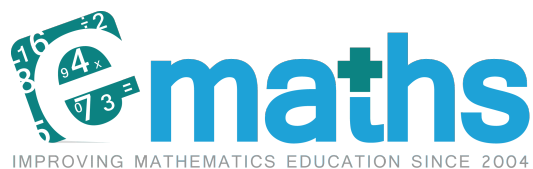


National curriculum tests

Key stage 2

Practice Paper: Reasoning R6

First name						
Middle name						
Last name						
Date of birth	Day		Month		Year	
School name						



Key Stage 2 National Curriculum Tests - Practice Paper - Reasoning

Instructions

You **may not** use a calculator to answer any questions in this test.

Questions and answers

You have **40 minutes** to complete this test.

Follow the instructions for each question.

Work as quickly and as carefully as you can.

If you need to do working out, you can use the space around the question.

Do not write over any barcodes.

Some questions have a method box like this:

Diagram illustrating a method box for a question. The box is a grid of 20 columns and 10 rows. On the left side of the grid, there is a rounded rectangular box containing the text "Show your method". On the right side of the grid, there is a smaller, empty rectangular box.

For these questions you may get a mark for showing your method.

If you cannot do one of the questions, **go on to the next one.**

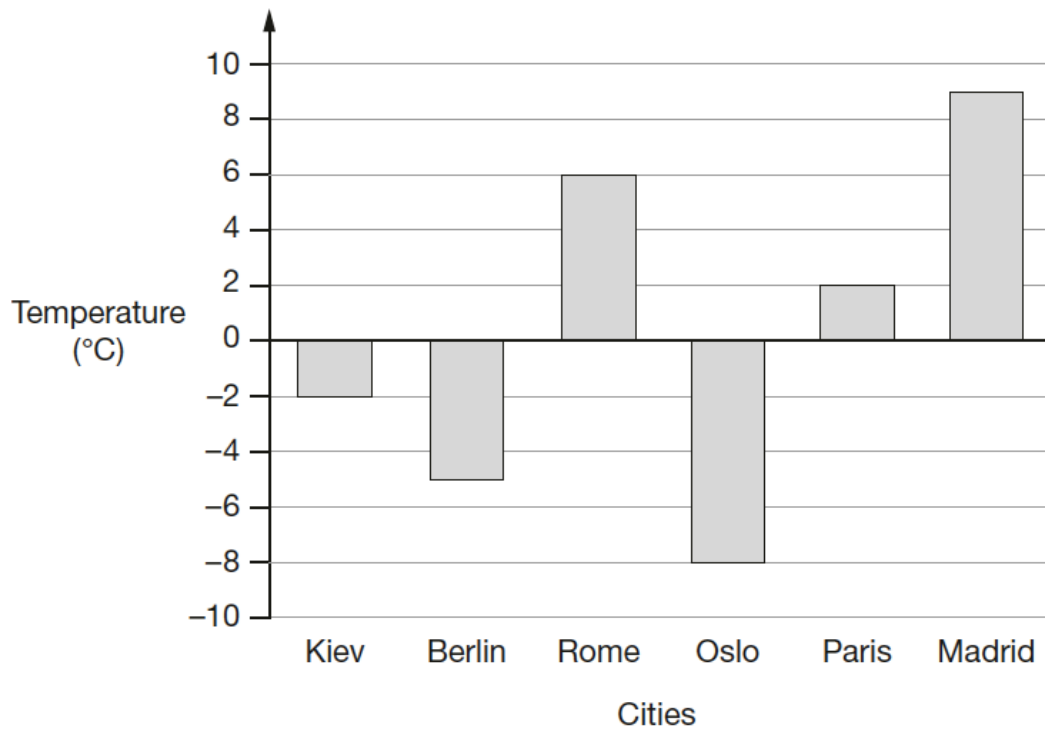
You can come back to it later, if you have time.

If you finish before the end, **go back and check your work.**

Marks

The number under each line at the side of the page tells you the maximum number of marks for each question.

- 3 This graph shows the temperature in six cities on a day in January.



Which city was 11 degrees **colder** than Rome?

1 mark

What was the **difference** between the temperature in **Paris** and the temperature in **Oslo**?

°C

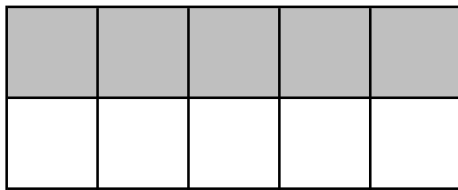
1 mark

4 Here are some shapes made of squares.

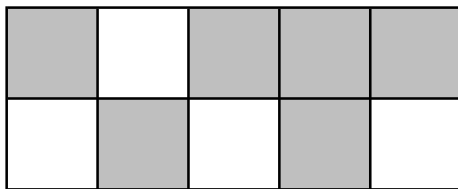
A fraction of each shape is shaded.

Match each shape to its equivalent fraction.

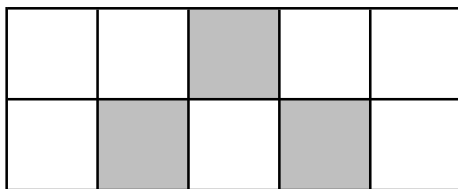
One has been done for you.



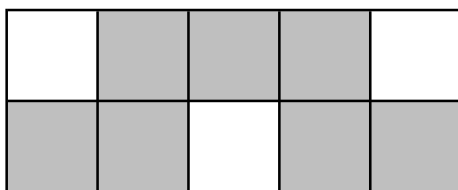
$$\frac{3}{10}$$



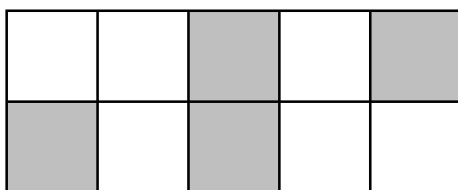
$$\frac{7}{10}$$



$$\frac{3}{5}$$



$$\frac{5}{10}$$



$$\frac{2}{5}$$

2 marks

5 What is **256** minutes in hours and minutes?

hours minutes

1 mark

6 Jon's watch shows five minutes past nine.

The watch is **eight** minutes fast



What is the correct time?

1 mark

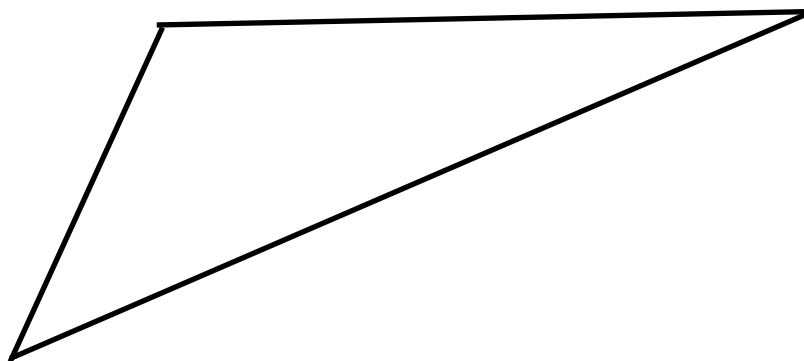
7 In the squares, write a multiple that belongs to each set.

One has been done for you.

numbers from 1 to 99	multiple of	10	60
numbers from 101 to 199	multiple of	30	
numbers from 201 to 299	multiple of	20	
numbers from 301 to 399	multiple of	40	

2 marks

9 Here is a triangle.



Measure the shortest side accurately, in centimetres.

 cm

1 mark

Measure the smallest angle.

 °

1 mark

10

Write the missing digits to make this long multiplication correct.

$$\begin{array}{r}
 2 \square \\
 \times \square 6 \\
 \hline
 144 \\
 960 \\
 \hline
 1104
 \end{array}$$

 2 marks

- 11 Here is a number written in Roman numerals.

CV

Write the number in figures

1 mark

- 12 What number is halfway between 1.8 and 2.5 ?

1 mark

- 13 Round 436,116

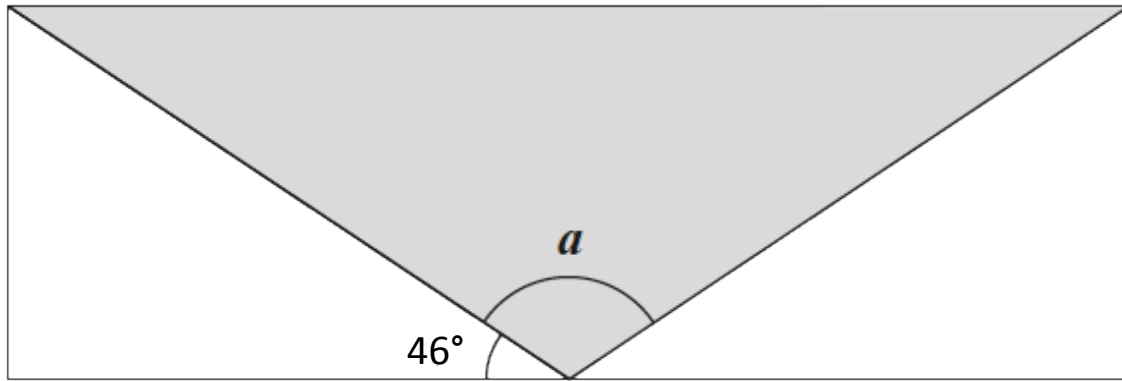
to the nearest 10,000

to the nearest 1,000

to the nearest 100

2 marks

- 14 A shaded isosceles triangle is drawn inside a rectangle.



Not to scale

Calculate the size of angle a .

Show your method

a is	°
--------	---

2 marks

15 Large pizzas cost £9.25 each.

Small pizzas cost £7.50 each.

4 children together buy 2 large pizza and 5 small pizzas.

They share the cost equally.

How much does each child pay?

Show your method

£

2 marks

16 Seven children measure their heights.

Child	Height (cm)
Dan	152
Jane	144
Amrit	141
Maya	139
Poppy	146
Phil	136
Sam	136

What is the mean height of the children?

Show your method

cm

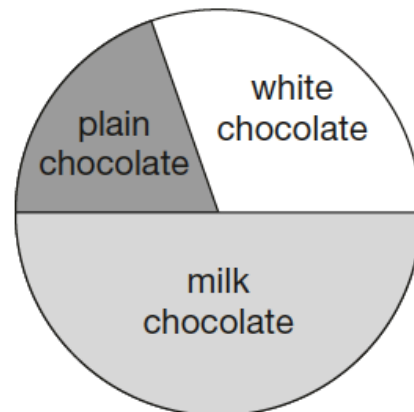
2 marks

17 190 girls and 80 boys were asked which kind of chocolate they like best.

These two pie charts show the results.



190 girls



80 boys

Danny says,

"The pie charts show that more girls than boys liked milk chocolate best."

Danny is correct.

Explain how you know.

A large, empty, cloud-shaped box with a scalloped border, intended for the student to write their explanation.

1 mark

